



# University of the Ryukyus

## 2021 - 2022





# Island wisdom, for the world, for the future.

Located in the southwest of Japan, the University of the Ryukyus has many attributes distinct unto itself – the pristine natural beauty of the subtropical archipelago and the cultural legacy of the five-hundred year reign of the Ryukyu Kingdom, which are both registered as UNESCO World Heritage Sites.

I welcome you to experience the unique learning environment offered by the University of the Ryukyus.



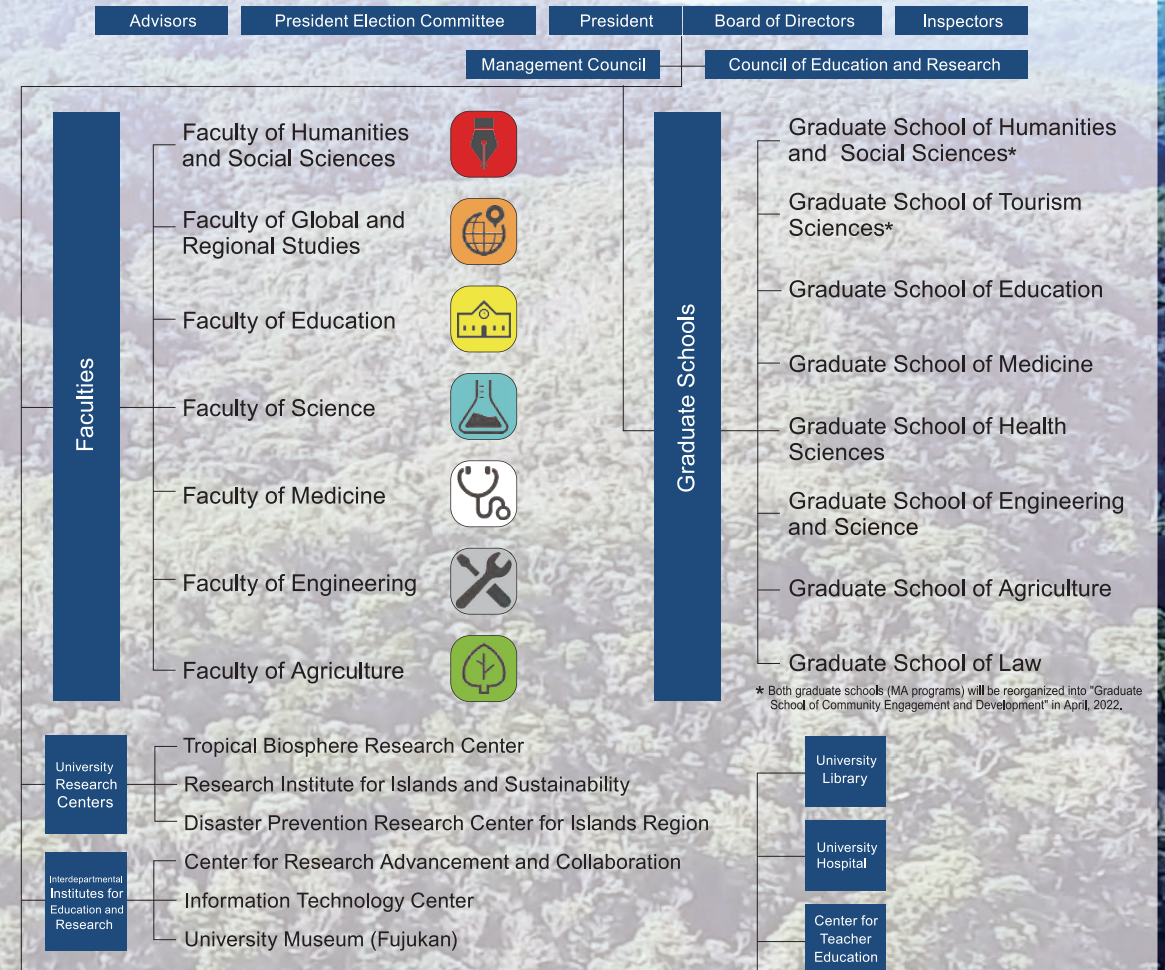
NISHIDA Mutsumi  
President  
University of the Ryukyus

西日睦

Read More



## Organizational Chart



## Degree Programs

Undergraduate

Postgraduate: Master's  
Doctoral

## Non-Degree Programs

Research Student

Auditor

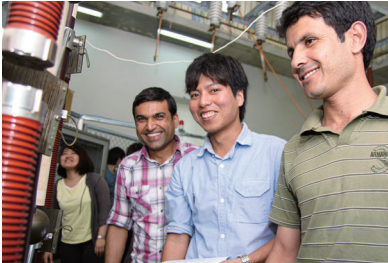
Exchange Student





## 1 SPECIAL GRADUATE PROGRAMS

The University offers three special programs that are taught primarily in English.



Conducting an experiment in the lab

### Smart City Human Resources Development Program

Engineering Course

This program aims to develop efficient, livable and sustainable urban environments through an interdisciplinary approach. The special program combines artificial intelligence, big data analysis, IoT, and data science in order to make a hyper-smart society become a reality.



### Ryukyu International Marine Program (RIMP)

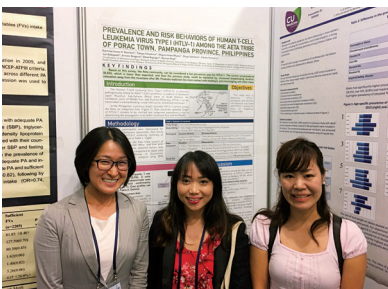
Science Course

This program is dedicated to conservation of the natural marine environment, their sustainable use, and mitigating natural disasters.

Graduates are expected to become leaders in marine policy, academia and industry within the rapidly developing ASEAN and Oceania regions.



Examining corals near Sesoko Station



Presenting at an international academic conference

### Okinawa Global Health Science Program

This program accepts students from a wide range of disciplines including healthcare, biomedical science, public health and health policy planning. Students choose a laboratory/department and improve research skills under supervisors. Students also can improve practical skills by attending a JICA training course for health practitioners from low and middle-income countries. Okinawa is only the Japanese prefecture located in the subtropical zone. Thus, the health challenges in Okinawa are often similar to those of low and middle-income countries. This program offers students an opportunity to learn how high levels of longevity and the eradication of parasitic diseases are achieved in Okinawa.



## 2 RYUKYUS INTERNATIONAL STUDENT EXCHANGE (RISE) PROGRAM

RISE Program is an exciting program between the University and its international partners. International students experience Ryukyu life while conducting research while earning transfer credits to their home institutions.

Okinawan and Japanese culture courses are also offered to help students gain a deeper understanding of both Okinawan and Japanese culture and customs while staying in Okinawa.

Tuition fees are exempted for students from our partner institutions.

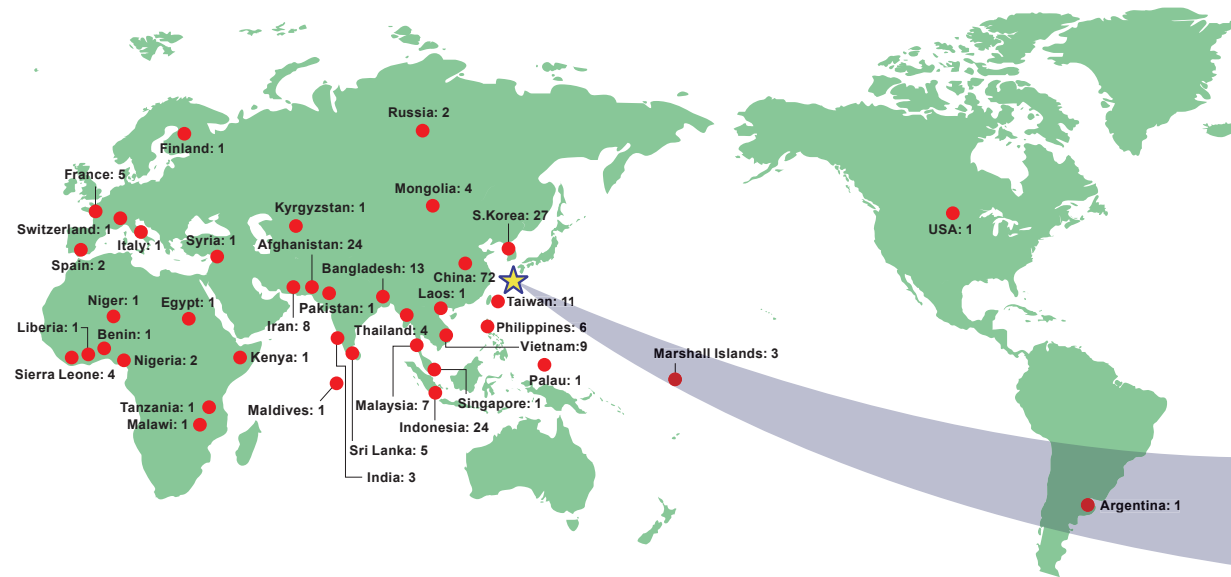


Paddling a traditional *sabani* boat



# International Students by Country/Region (May1, 2021)

254 students from 39 countries/regions



■ Sesoko Station



■ Experimental forest



■ Yona Station

Tropical Biosphere Research Center - Sesoko Station

Subtropical Field Science Center - Yona Field



■ Okinawa Rail  
Photo by Animal Ecology Lab



■ Main campus



University Hospital

Tropical Biosphere Research Center - Iriomote Station



■ Coral reef research



■ Iriomote cat  
Photo by Animal Ecology Lab

## External Offices



■ Tokyo Office



■ Taipei Satellite Office



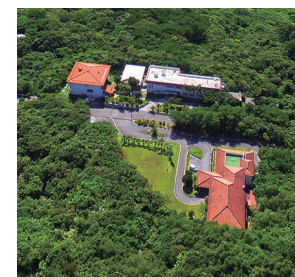
■ Hawaii Liaison Office, Honolulu



■ Laos Satellite Office, Vientiane

■ Germany Satellite Office, Düsseldorf

■ Brazil Satellite Office, São Paulo



■ Iriomote Station



■ Japan's largest mangrove forest

## 3 CAMPUS LIFE

### HOUSING & LIVING COSTS

- Student Dormitory (single room): ¥19,400\* - ¥30,000\* monthly
  - International House (single room): ¥18,000\* monthly
- Single rooms are only available to exchange students and researchers.  
\*Does not include cost of utilities (ca. ¥5,000 per month) or cleaning fees (ca. ¥15,000 one time)
- Living Expenses: ¥80,000-/month



Presenting at a global festival on campus

### SCHOLARSHIPS

A variety of scholarships are available to enable international students to focus on their studies free of financial worry.

The University's Special Graduate Programs supports qualified international students with scholarships that provide partial subsidies for tuition.

### STUDENT TUITION & FEES



Relaxing in the University dormitory

<b>Entrance exam. fee</b>	<b>¥17,000</b> (undergrad)
	<b>¥30,000</b> (grad)
<b>Admission fee</b>	<b>¥282,000</b> (undergrad & grad)
<b>Tuition</b>	<b>¥535,800/year</b> (undergrad & grad)

Qualified students are eligible for full or partial exemption of tuition fees.



Practicing brush calligraphy



## Interdisciplinary Research Projects

The University of the Ryukyus has launched several interdisciplinary research projects seeking solutions to regional to global challenges.

### Network for *Shurijo* Reconstruction and Renaissance

*Shurijo* (Shuri Castle), a UNESCO World Heritage Site, and the symbol and pride of Okinawa, was destroyed by fire on October 31, 2019. This project was established to revive the landmark through research and education. The connection to *Shurijo* is deep for the University of the Ryukyus, which was founded in 1950 on the very grounds of the castle devastated during the Battle of Okinawa.

The network serves as a forum not only for the entire University, but also connects to other research institutions and government entities, providing a means for local residents to contribute to rebuilding the castle. The network currently supports four research projects, including conducting strength test of local timber for the reconstruction of the main hall, preservation and promotion of historical technologies in the manufacture of red ceramic roof tiles, and two urban planning projects of the Shuri environs. These focus on mapping local heritage resources and rethinking town planning based on the historical record.



The Main Hall will be restored using local timber



Inspection of the damage



Okinawan lumber (above)  
Distinctive red ceramic tiles (below)

### Realizing a Sustainable, Symbiotic Society through Resource Recycling

Achieving sustainability is a global challenge, and it is not easy to meet resource and environmental constraints while maintaining a healthy economy, so a societal shift is needed. In this research project, we aim to create a social-based model for food and energy recycling based on the Okinawa context. The basic idea is to not just address individual problems but to use a comprehensive system. Information technology is used to link a variety of technologies such as land-based “Recirculating Aquaculture Systems (RAS),” renewable energy, and waste food recycling to solve interrelated problems simultaneously. This model of a recycling society cannot only be used in Okinawa but also in Southeast Asia and subtropical oceanic islands.



Research center



Aquaculture system



System control panel



# University of the Ryukyus by the Numbers

(May 1, 2021)

## ▪ Faculties

**7** faculties      **15** programs

## ▪ Graduate Schools

**8** graduate schools      **21** programs

## ▪ Students

**7,976**  
 7,096 Undergraduate students  
 474 Graduate students (Master's courses)  
 316 Graduate students (Doctoral courses)  
 90 Professional degree students

## ▪ Student-Teacher ratio

$7,976 / 818 =$  **9.75**

## ▪ International Exchanges

Number of universities/institutions with  
**126** schools      **42** countries/regions

Student exchanges with partner universities  
**19** students received

## Faculty exchanges

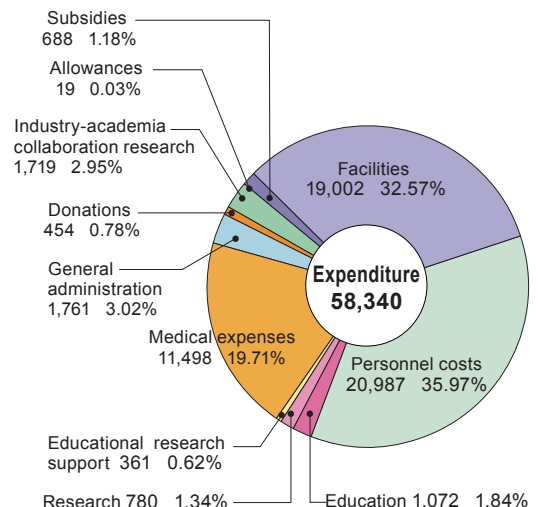
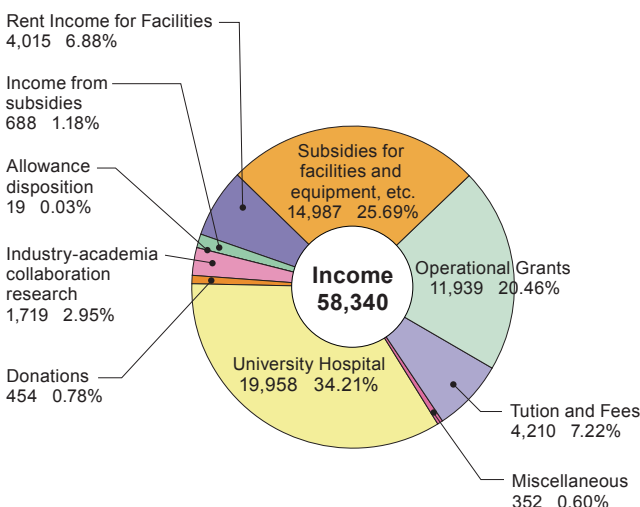
Faculty members conducting research abroad  
**5**

Researchers from overseas received  
**41**

## International students

**254**

## ▪ Budget (Unit: Million JPY)



The Times Higher Education (THE)  
 Impact Rankings 2021 (April, 2021)

**33rd** / the top 73 universities in Japan